

Power Beyond Solar

The World Leading PV and Smart Energy IoT Total Solution Provider



Vertex Product information



Vertex Product information



For more information regarding Vertex S+ module,
Please follow our social media accounts or scan the QR codes to visit us at our website.

Vertex S+

445W+

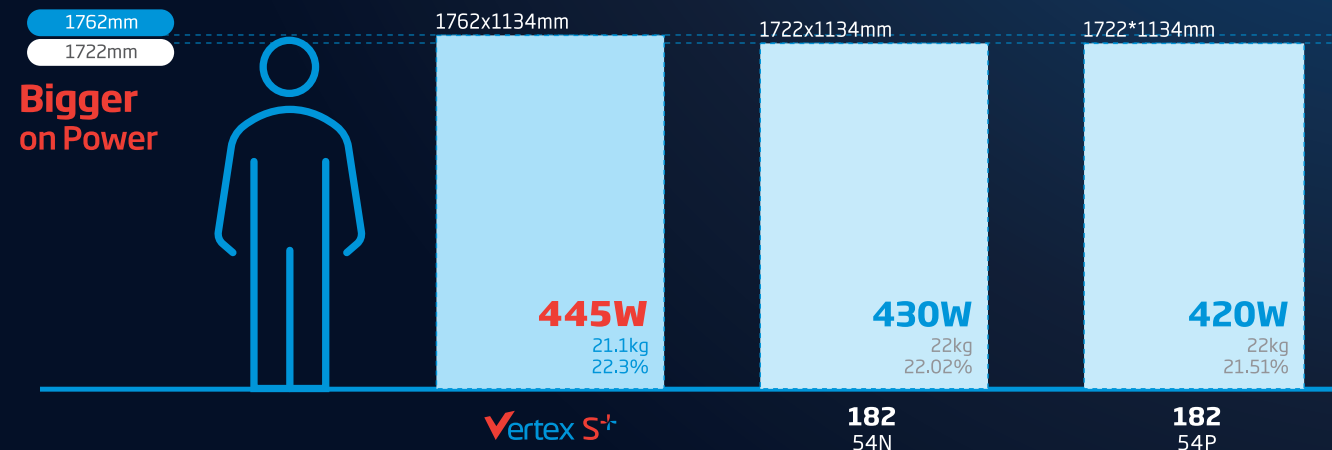
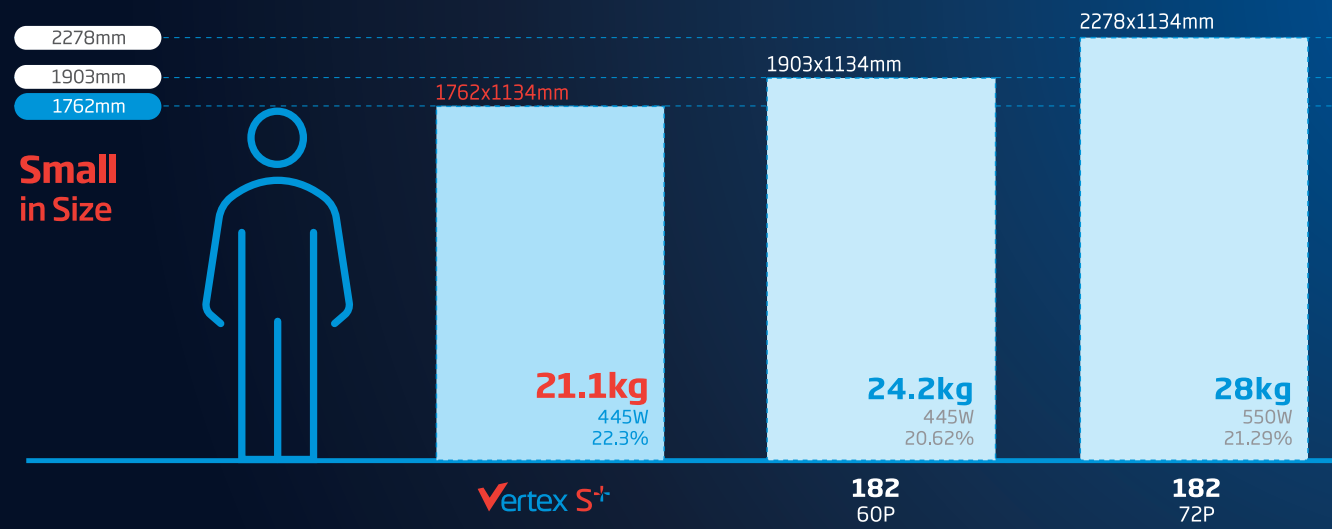


Small in Size **Bigger on Power**

Small in Size, Bigger on Power

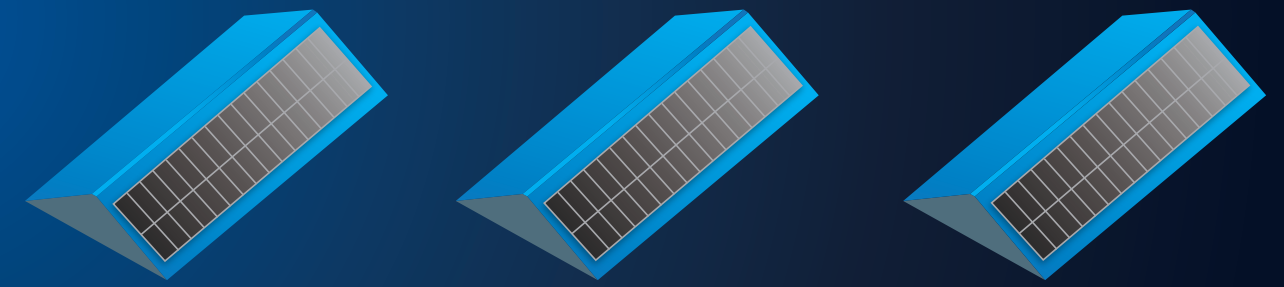
Excellent Balance between Power, Size and Weight

1.76m module size, up to **40W⁺** power higher



	210R 48 N	182 54 N	182 54 P
Power(W)	445	430	420
Efficiency(%)	22.3	22.02	21.51
Structure	Dual-glass	Backsheet	Backsheet
Dimension(mm)	1762*1134*30	1722*1134*30	1722*1134*30
Weight(kg)	21.1	22	22
Mechanical load(Pa)	5400/4000	5400/2400	5400/2400
Fireproof Class	Class A+C	Class C+C	Class C+C
TransportationCapacity(Kw/40HC Container)	416	402	393
Warranty(Year)	up to 25+30	15+30	12+30

More Installation, Less Cost, and High Revenue



182-54P 420W 2rows16columns 13.44kW installed capacity	182-54N 430W 2rows16columns 13.76kW installed capacity	Vertex S⁺ 445W 2rows16columns 14.24kW installed capacity
---	---	---

For 25-year power generation on a south-faced sloping rooftop with size of 16.7m x 5.5m



The power generation in the 25 years could be **9.6%** more and the extra **32,146**kwh electricity gain can drive the EV for **224,797**km

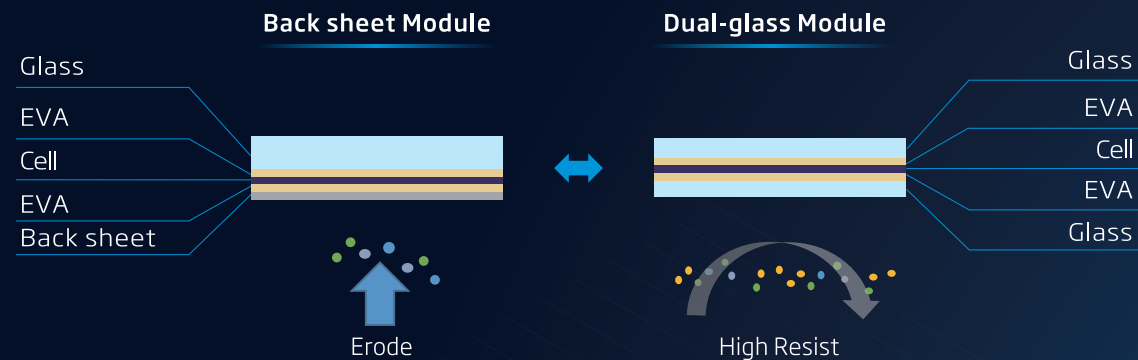
power generation **↑ 9.6%**
 =
 drive the EV **+ 224,797**km



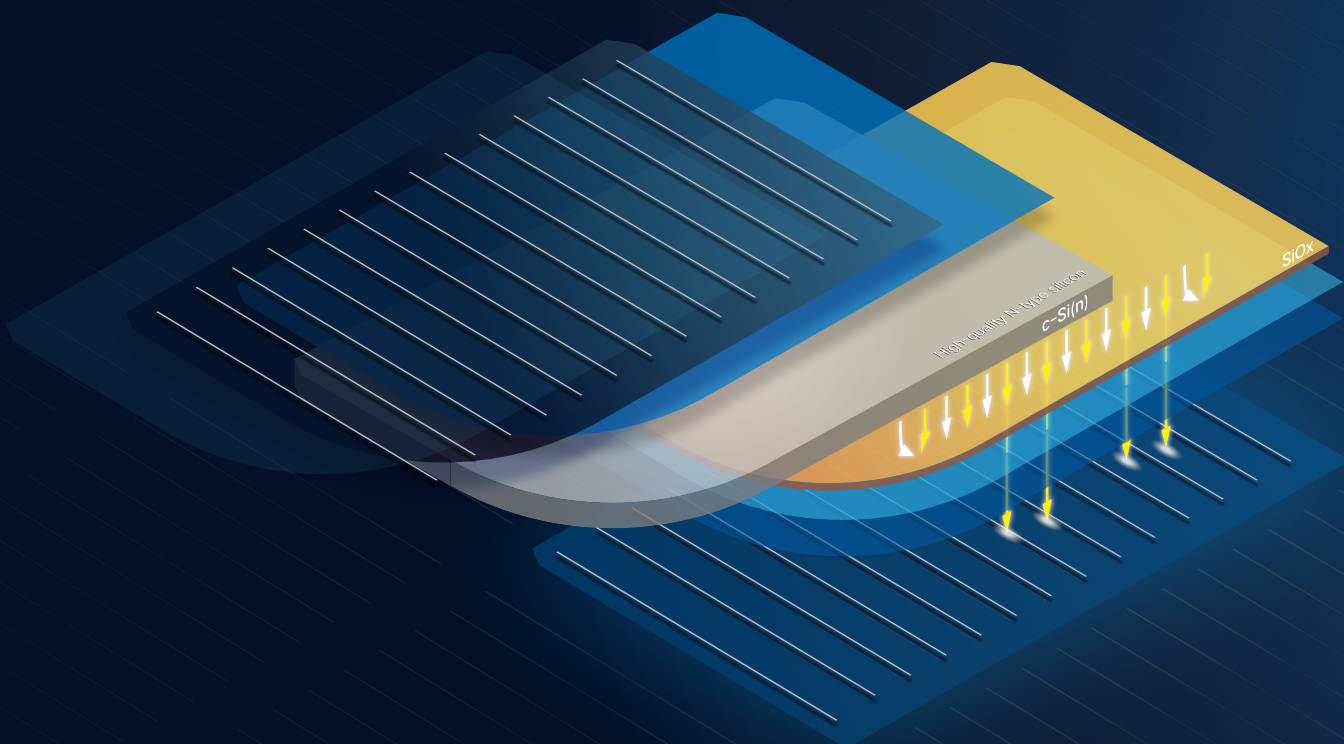
Advanced technology, High reliability

High reliability

1.6+1.6mm **dual glass** design



n type i-TOPCon technology with 210mm innovative platform



Low temperature coefficient: -0.30%/°C

Vertex S+	-0.30 %/°C
P-PERC	-0.34 %/°C

With N-Type silicon wafer as substrate, the minority carrier life is longer than P-type silicon wafer

Outstanding Mechanical Load



Positive mechanical load up to **5400Pa** with snow thickness of **50cm***



Pass 35mm Hail Test according to IEC61215-2 : 2016 ;



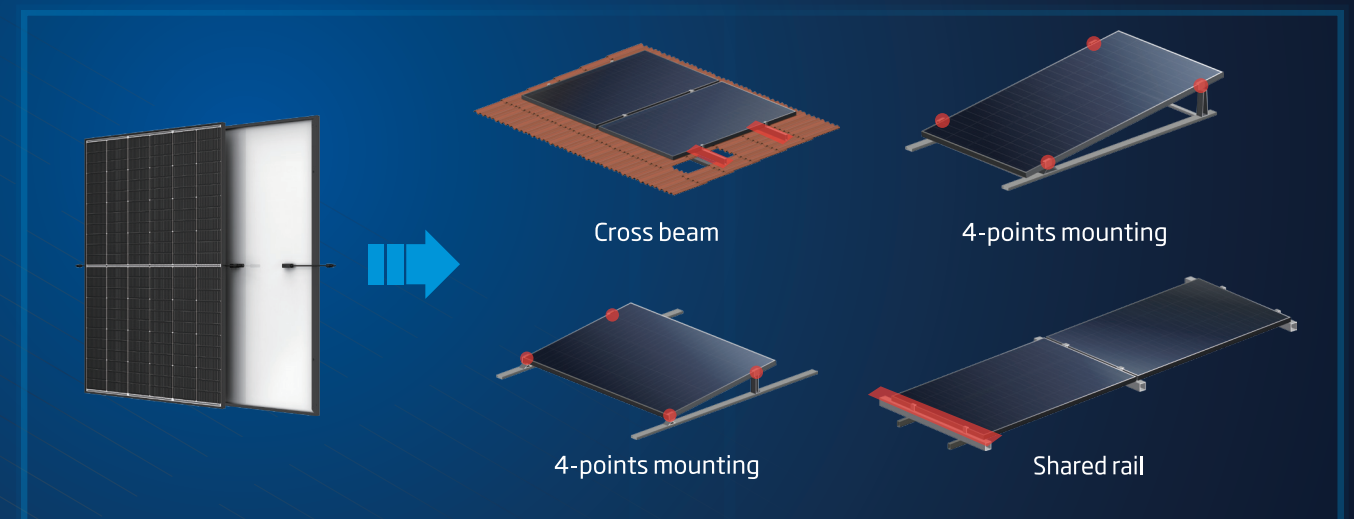
Negative mechanical load up to **4000Pa** with wind speed of 235km/h (**17 class hurricane**)*

Better frame design for Vertex S+ :

- thicker frame profile
- stronger material strength
- larger frame chamber to disperse loading pressure

Vertex S+ is specially designed for working at extreme weather conditions thanks to its excellent mechanical performance.

Flexible installation and high system compatibility



* According to IEC2016 with SF=1.5

Isc: 10.68A

Voc: 52.2V

阳光电源
SUNGROW

HUAWEI

solis

SMA

GOODWE

solar edge

Growatt

上能电气
SINENG



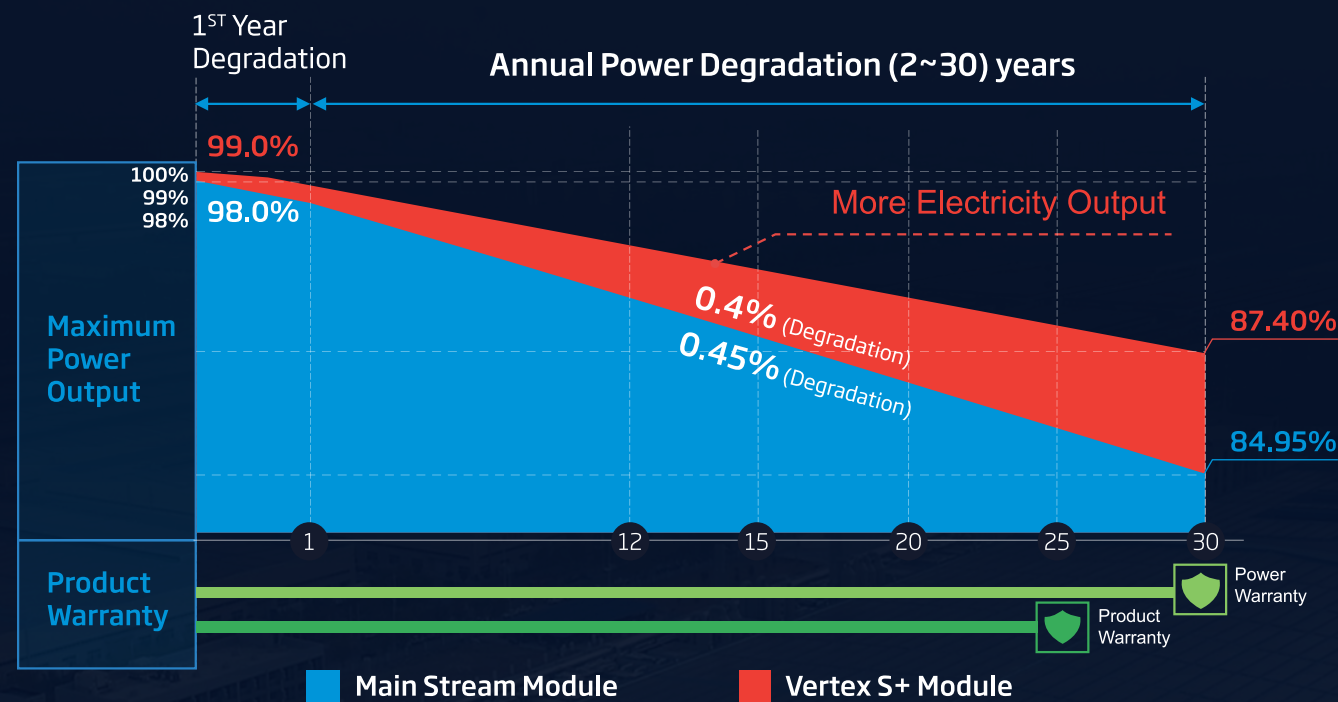
Plug-and-play, no need to worry about system compatibility.

Long Guaranteed Product Lifecycle

Lower degradation, higher power generation, and longer product warranty

Product warranty	First year degradation	Annual power attenuation	Power warranty
up to 15 years	1%	0.4%	30 years

Lower degradation, ~2.5% higher power reservation up to 30 years



The Future From Now On, More than Bigger Power

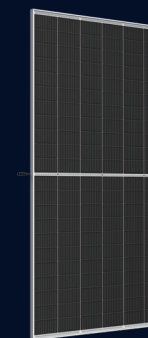
Maximum power output

445W⁺

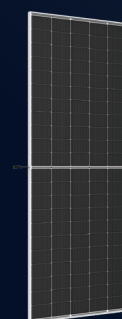
Maximum efficiency

22.3%⁺

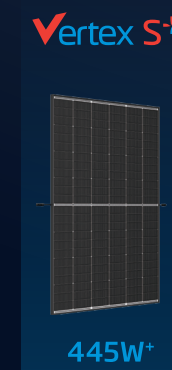
- ✓ n type i-TOPCon technology with 210mm innovative platform
- ✓ 1.6+1.6mm dual glass design
- ✓ Higher Power, More Energy Gain
- ✓ Outstanding reliability and safety
- ✓ up to 15 years product warranty, 30 years power warranty
- ✓ 3% Lower carbon emission in production



695W⁺



605W⁺



445W⁺

Industry |

600W

500W

410W